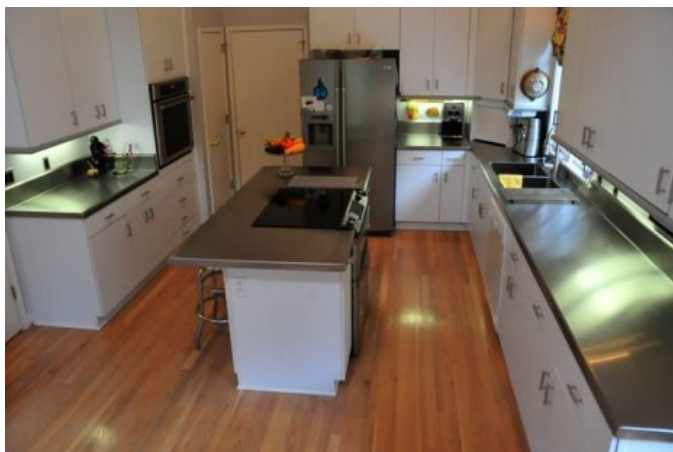


Roofing and Sheet Metal RD Herbert & Sons



Portfolio :: Custom Stainless Steel

Kitchen Countertops – Nashville, TN



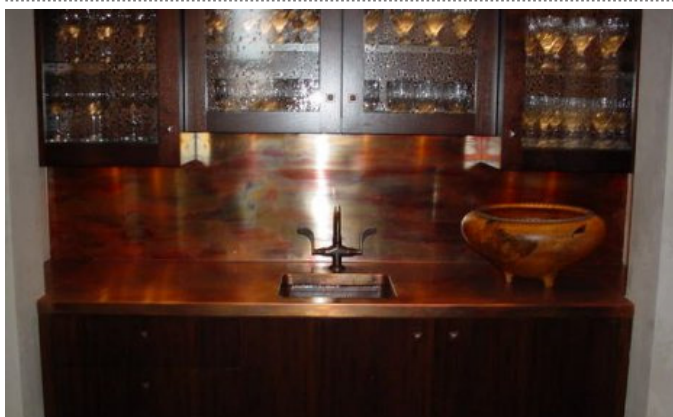
PROJECT INFORMATION:

RD Herbert & Sons Company fabricated these custom countertops with an integrated sink. The metal forms around the substrate and is glued down. During installation the countertop fastens to the base cabinets for stability.



DETAIL:

The double sink constructed from 14 gauge stainless steel type 304 is seamlessly welded to the countertop. Standard drains were used for ease of plumbing installation. A bullnose edge was used on the front of the countertop. The radius integration of the backsplash allows for easy cleaning and gives a finished look to the space.



DETAIL:

This butler's pantry glows as the light reflects off of the 32-oz copper countertop and backsplash. Fabricated with welded edges, the antique finish adds old world charm to this space.

Roofing and Sheet Metal RD Herbert & Sons



Portfolio :: Custom Stainless Steel

Kitchen Countertops – Nashville, TN



DETAIL:

Blending the more traditional look of a farmhouse sink with a more modern material, allows for the sink to integrate into the countertop and backsplash. A perpendicular edge on the countertop allows the sink and front of the countertop to be flush and fits in with the straightforward style of the kitchen. All of the work is fabricated from 14 ga stainless steel with a type 304 No. 4 brushed finish.

The countertop has a seamless weld for the top, edge and backsplash at the intersection of the corner. The hood is a prefabricated model.

